

Goals and Organizational Structure

This section provides the goals and organizational structure sections of the Sacramento Regional County Sanitation District's (SRCSD) sewer system management plan (SSMP). As the regional provider of wastewater transmission and treatment services for the Sacramento metropolitan area, SRCSD operates and maintains 145 miles of large (30 inch to 120 inch diameter) interceptor pipelines, large force mains, pump stations, and the regional wastewater treatment facility located in Elk Grove.

1. Goals

The goal of the SSMP is to provide a plan and schedule to properly manage, operate, and maintain all parts of the sanitary sewer system. This will help reduce and prevent sewer system overflows (SSO), as well as mitigate any SSOs that do occur.

2. Organization

This section provides a description of the SRCSD organizational structure for developing and implementing the SSMP and the chain of communication for reporting and responding to overflows.

2.1 Authorized Representative

Mary Snyder is the District Engineer and Manager of the Department of Water Quality and has overall responsibility for the management of SRCSD and the Sacramento County Sanitation District 1 (CSD-1). Mary is responsible for the development and implementation of the SRCSD SSMP. Shown on Figure 2-1 is the organizational chart of individuals who are responsible for the various SSMP sections and who they report to in the Water Quality Department. There are four main divisions in the Water Quality Department, the Communications and Media Division, the Finance Division, the SRCSD Division, and the Policy and Planning Division. The CSD-1 Division provides assistance to the SRCSD SSMP through a contract with SRCSD.

The majority of the SSMP sections will be prepared by the SRCSD Division. Stan Dean is the SRCSD Division Chief in charge of wastewater conveyance and treatment operations. Stan is the District's authorized representative for the operations, maintenance, construction, and laboratory programs for all SRCSD facilities. As the authorized representative, Stan is authorized to certify all electronic SSO reports submitted to the state or Regional Water Board.

2.2 Parties Responsible for Implementation

SRCSD is responsible for the construction, design, operations, and maintenance of the Sacramento Regional Wastewater Treatment Plant (WWTP) and for more than 145 miles of sewer interceptor pipelines. SRCSD is divided into work sections focusing on engineering, operations, and maintenance of the regional wastewater treatment plant, engineering, operations, and maintenance of the interceptor system, policy and planning, finance, and

communications and media. Figure 2-1 identifies the SRCSD organizational structure and the lines of authority for individuals who manage the interceptor system. In addition, Figure 2-1 shows the specific groups and individuals within the SRCSD organization who are responsible for the development of the major SSMP components. A more in-depth breakdown of individual responsibilities within the major SSMP components is included in Table 2-1.

2.3 Chain of Communication for Reporting Sewer System Overflows

The chain of communications for SRCSD to report SSOs is shown in Figure 2-2. The general response procedure begins when SRCSD receives notification of the SSO. The Interceptor Operations and Maintenance Superintendent coordinates with the Mechanical Maintenance Supervisor to assign the crews that will investigate, assess, contain, and correct the SSO. Regulatory Compliance works in coordination with the O&M field crew to obtain all necessary information to report the SSO to the applicable regulatory agencies. When the SSO reports are completed, they are certified and submitted to the state or Regional Water Board by the Authorized Representative.

TABLE 2-1
Parties Responsible for Implementation

SRWTP Telephone Number (916) 875-9000

Main Task/Sub-Task	Specific Details	Legally Responsible Official	SRCSD Primary Contact
Application for Permit Coverage	Submit Notice of Intent (NOI) to the state identifying the agency's authorized representative including required permit fee.	Director, District Engineering — Mary Snyder	Mary Snyder
Reporting Program	Agency must report all SSOs to the statewide SSO database via the Internet.	Mitch Maidrand	Anna Johnson
SSOs Reporting Process Requirements	SRCSD management staff and regulatory compliance staff training on new SSO reporting procedures		Anna Johnson
Section 1: Goals	Agency's goals to operate and maintain its sewage collection system.	Mary Snyder	Anna Johnson
Section 2: Organization	Agency's organization to develop and implement the SSMP and to respond to SSO's.	Mary Snyder	Anna Johnson
Section 3: Legal Authority	Agency's legal authority to operate and maintain its sewage collection system.	Mary Snyder	
	Operating agreements between SRCSD and contributing agencies		Michael Meyer
	Sewer use ordinance		Steven Teeters
	Enforcement of Legal Authority with respect to illegal discharge, and permitted discharge		Glen Del Sarto
Section 4: Operations and Maintenance Program	O&M program including information on the agency's collection system maps, preventive O&M, Rehabilitation & Replacement Plan, Training, Contingency Equipment and Replacement Inventory.	Mike Mulkerin/ Mitch Maidrand	Mike Brady
Mapping	Updating of Interceptor Maps and GIS.		Jack Naves
Preventive Maintenance Program	Written description of the preventative maintenance activities the agency employs.		Mike Parshall Allen Gorrell

TABLE 2-1
Parties Responsible for Implementation

SRWTP Telephone Number (916) 875-9000

Main Task/Sub-Task	Specific Details	Legally Responsible Official	SRCSD Primary Contact
Rehabilitation and Replacement Program	Short and long term plan for the rehabilitation or replacement of interceptor facilities.		Mike Brady Steve Norris
SCADA Monitoring	SCADA monitoring plan to include alarms and necessary Operations and Maintenance work required to minimize SSOs.		Shift Ops Manager (Vacant)
Staff Training	Staff O&M training and assurance that contractors are adequately trained.		Glenn Bielefelt
Equipment and Parts Inventory (Maximo)	Equipment and parts inventory including the identification of critical replacement parts.		Dean Wyley (MAXIMO)
Equipment and Parts Inventory (Maximo)	Equipment and parts inventory and preventive maintenance scheduling.		Troy Jurach
Automation	Interceptor monitoring activities that allow SRCSD staff to have a more proactive level on SSO prevention.		Michael Seamons Juliane Gadd Glenn Bielefelt
Facility Startup	Ensure proper startup of new Interceptor Facilities before SRCSD takes responsibility.		Mike Donahue
Section 5: Design and Performance Standards	Provide Design and Construction Standards for the Installation, Inspection, and Testing of New Sewer Facilities, or for Rehabilitation and Repair Projects.	Stan Dean	Kyle Frazier
Design Standards	Design standards for new and rehabilitated interceptor pipe.		Kyle Frazier
Design Standards	Construction and Testing Standards.		Lysa Voight
Design Standards	Design standards for new and rehabilitated interceptor facilities.		Kyle Frazier
Inspection and Testing Standards	Inspection and testing standards for new and rehabilitated systems.		Mike Donahue Kyle Frazier

TABLE 2-1
Parties Responsible for Implementation

SRWTP Telephone Number (916) 875-9000

Main Task/Sub-Task	Specific Details	Legally Responsible Official	SRCSD Primary Contact
Section 6: Overflow Emergency Response Plan	Develop a SSO Response Plan Including Written Procedures Defining How the Agency Responds to SSOs.	Mitch Maidrand	Anna Johnson
SSO Response	Training on regulatory compliance requirements for SSO response procedures		Anna Johnson
SSO Response	Training on general O&M requirements for SSO response procedures		Mike Brady
SSO Response	SSO Response – Field crews coordination		Mike Parshall Allen Gorrell
SSO Response	SSO Response coordination and equipment for SSOs involving private users		Glen Del Santo
SSO Response	SSO Response coordination for SSOs occurring at construction site		Mike Donahue
Section 7: Fats, Oils, and Grease Program	Evaluate SRCSD Interceptor Service Area and Determine if a FOG Control Program is Required.	Mary Snyder	
FOG Program Public Outreach	Develop a program for public education outreach that promotes proper disposal of FOG.		Linda Dorn Bernie Galvin
Section 8: System Evaluation and Capacity Assurance Plan	Evaluate Areas Experiencing Capacity-Related Overflows. Establish Steps to Eliminate Capacity-Related Overflows Including Short- and Long-term CIP.	Mary Snyder	Michael Meyer
CAP	Hydraulic modeling, analysis, and capacity estimation of key components of the system.		Roy Carlson
CAP	Service area and flow projections for planning of capacity requirements.		Michael Meyer Steve Norris Roy Carlson

TABLE 2-1
Parties Responsible for Implementation

SRWTP Telephone Number (916) 875-9000

Main Task/Sub-Task	Specific Details	Legally Responsible Official	SRCSD Primary Contact
CAP	Dry weather, wet weather and storm event operation strategies and capacity enhancement measures.		Mike Brady Mike Donahue
CAP	Condition assessment for existing infrastructure and projected future capacity requirements.		Mike Brady
Section 9: Monitoring, Measurement, and Program Modifications	Maintain Records, Monitor and Assess the Effectiveness of the Program and Update as Necessary.	Mitch Maidrand	Anna Johnson
Section 10: SSMP Audits	Conduct Periodic Audits, at Least Every 2 Years, on the SSMP.	Mitch Maidrand	Anna Johnson
Section 11: Communications Plan	Develop a Public Awareness Program and a Plan to Communicate with Tributary Systems	Mary Snyder	Bernie Galvin Mitch Maidrand
Communications with the Public	Develop a public communication program with customers and potential customers.		Bernie Galvin
Communications with Satellite Agencies	Develop a plan of regular communications with satellite agencies.		Anna Johnson

KEY:
 Black Text = SSMP Role
 Blue Text = Position
 Red Text = Name of Person in Position
 LRO = Legally Responsible Official
 *Note that this organizational chart will be updated as staff changes occur

Figure 2-1: SRCSD Responsible Parties for Implementation of the SSMP - Org Chart

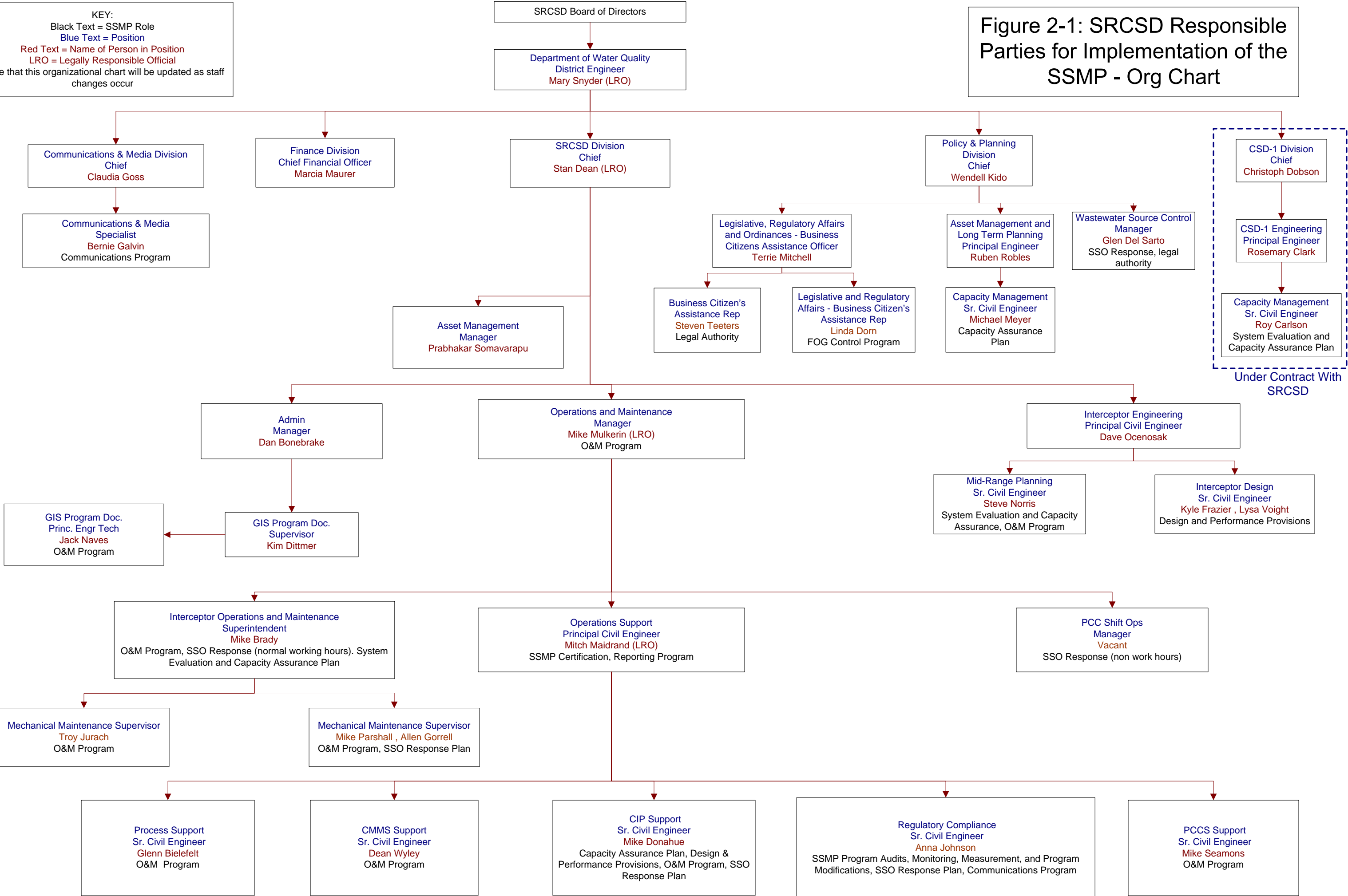


Figure 2-2: SSO Reporting Chain of Communications for SRCSD

