

PROJECT DETAILS

Principal Potential Participants, Water Purveyors, Land Use Authorities

SRCS, City of Elk Grove, City of Folsom, Ducks Unlimited Inc., The Nature Conservancy, Friends of the Swainson’s Hawk, Cosumnes River Preserve Partnership, Resources Legacy Fund, California Association of Resource Conservation Districts, Sacramento County Water Agency, U.S. Bureau of Reclamation, U.S. Bureau of Land Management, Sacramento County Farm Bureau, Sacramento Central Groundwater Authority, Sacramento Area Creeks Council, Regional Water Authority, County of Sacramento

Project Elements

- Centralized Project – source of recycled water supply at SRWTP
- Use of recycled water to irrigate permanent agricultural & habitat/mitigation lands in lieu of potable water supplies
- 2,000 to 8,000 acres of dedicated lands could be irrigated with recycled water
- Treatment and pumping facilities at SRWTP
- Transmission Piping: ~10 miles of 48-inch diameter transmission main
- On-site storage and distribution facilities near place of use

Principal Key Challenge

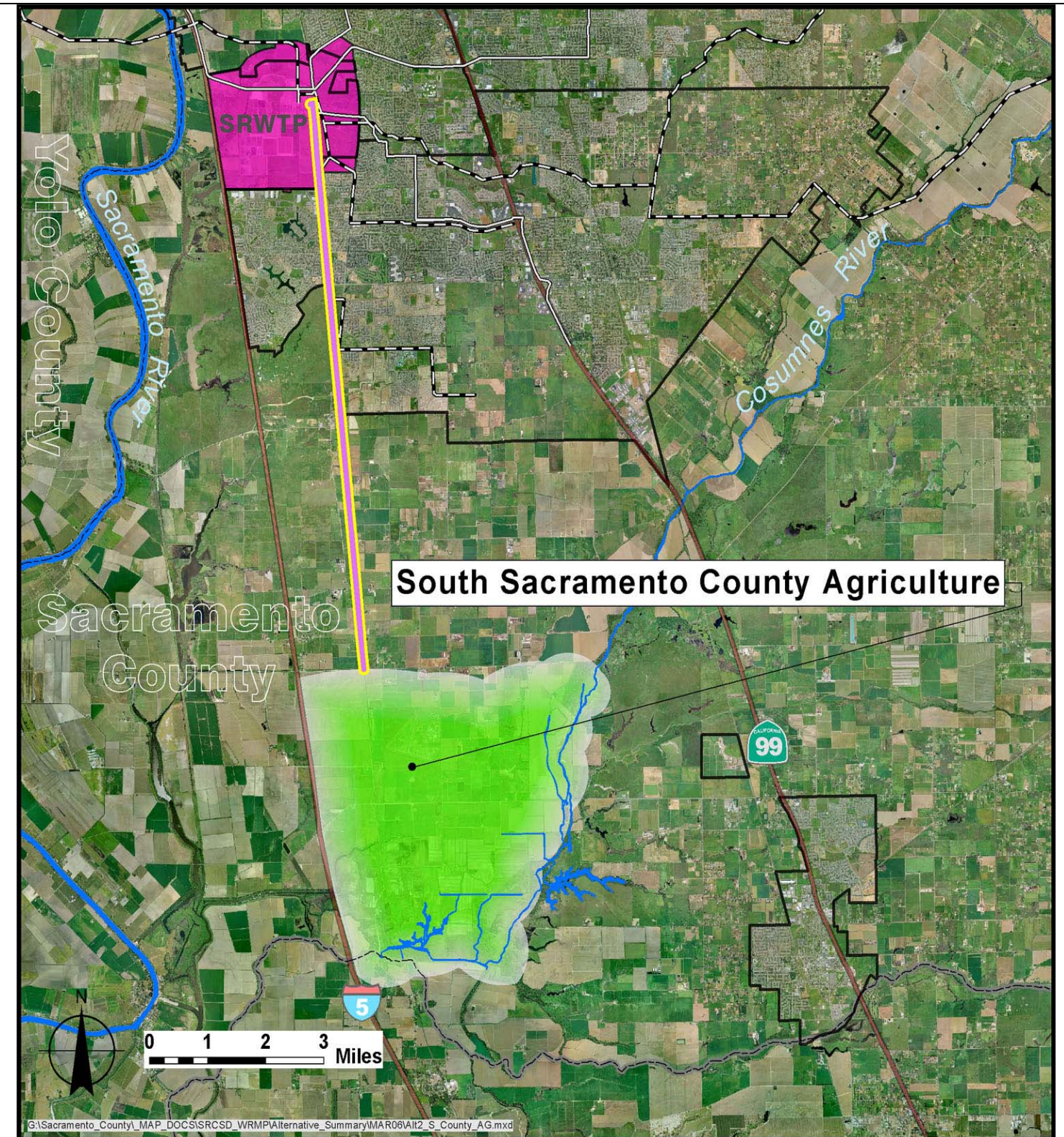
- Funding

Estimated Costs and Potential Recycled Water Demand

| Description | Disinfected Tertiary Recycled Water | |
|---|-------------------------------------|------------------------|
| | Phase I - 2,000 Acres | Phase II – 8,000 Acres |
| Estimated Annual Water Demand per Year (Acre-Feet per Year) | 10,440 | 41,760 |
| Apx. Number of Equivalent Homes | 18,500 | 74,000 |
| SRWTP Treatment and Pumping Costs | \$40.5 | \$174.4 |
| Transmission costs (in millions) | \$60.5 | \$60.5 |
| On-Site Costs (in millions) | \$14.8 | \$58.1 |
| Total Capital Costs (in millions) | \$115.8 | \$293 |
| O&M Cost per year (in millions) | \$2.4 | \$10.8 |
| Equivalent Uniform Annual Cost per Acre-Foot | \$712/AF | \$561/AF |

Benefits

- Use of recycled water in-lieu of potable water supplies to meet non-potable water demands
- A drought proof, reliable, and sustainable water supply for agriculture and habitat lands
- Benefits to surface and groundwater sources, aquatic, and terrestrial habitat
- Reduced discharge of effluent to the Sacramento River
- Support the State and U.S. Bureau of Reclamation goals for increased use of recycled water



South Sacramento County Agriculture & Habitat Lands Recycled Water Project – Project Details and Vicinity Map